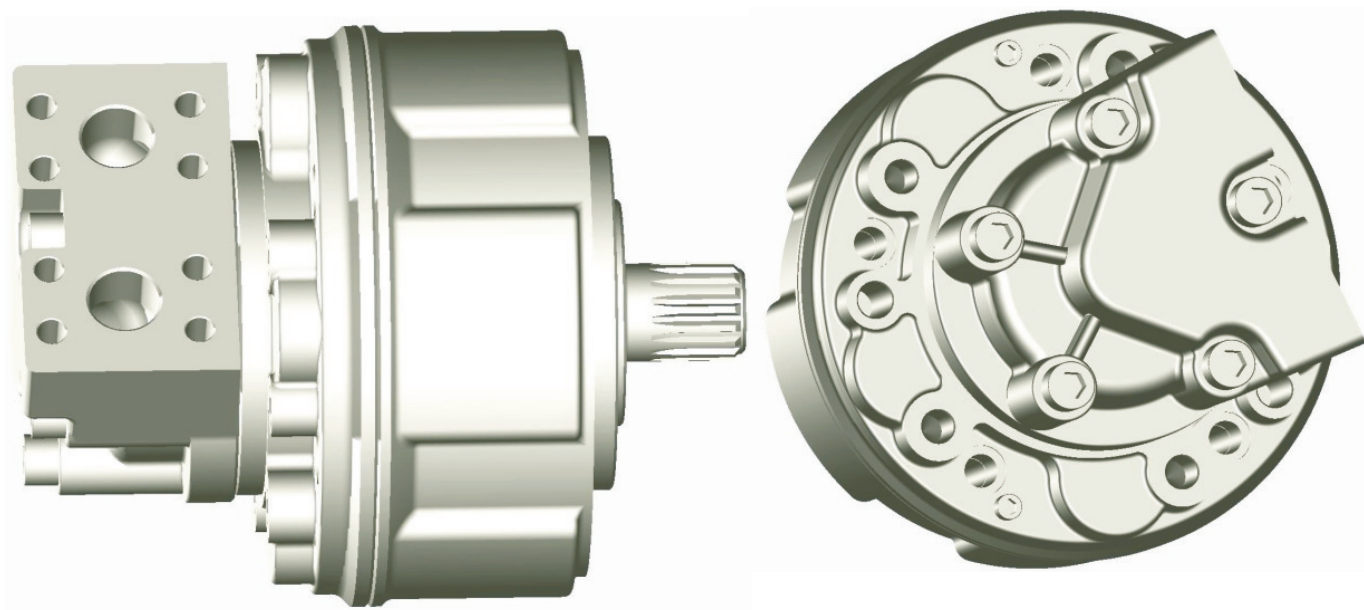


## GS05



**TABELLA DI PERFORMANCE**  
**PERFORMANCES TABLE**

|   | GS05     | 40   | 50   | 75   | 90   | 100  | 110  | 150  |
|---|----------|------|------|------|------|------|------|------|
| <i>Displacement / Cilindrata</i>          | [cc/rev] | 39   | 49   | 74   | 86   | 101  | 115  | 151  |
| <i>Bore / Alesaggio</i>                   | [mm]     | 25   | 28   | 28   | 37   | 40   | 35   | 40   |
| <i>Stroke / Corsa</i>                     | [mm]     | 16   | 16   | 24   | 16   | 16   | 24   | 24   |
| <i>Specific Torque / Coppia Specifica</i> | [Nm/bar] | 0.6  | 0.8  | 1.2  | 1.4  | 1.6  | 1.8  | 2.4  |
| <i>Pressure Rating / Press. Nominale</i>  | [bar]    | 250  |      |      |      |      |      |      |
| <i>Peak Pressure / Pressione di picco</i> | [bar]    | 450  | 425  | 400  | 375  | 350  | 325  | 300  |
| <i>Cont. Speed / Velocità Cont.</i>       | [rpm]    | 1800 | 1700 | 1500 | 1300 | 1100 | 1000 | 970  |
| <i>Max Speed / Velocità Max</i>           | [rpm]    | 2800 | 2600 | 2300 | 2000 | 1700 | 1600 | 1500 |
| <i>Peak Power / Potenza di Picco</i>      | [kW]     | 30   | 35   | 48   | 48   | 48   | 48   | 48   |

|                                  |    |                    |                                   |    |                  |
|----------------------------------|----|--------------------|-----------------------------------|----|------------------|
| <i>Approximative weight</i>      | 22 | [kg]               | <i>Peso Approssimativo</i>        | 22 | [kg]             |
| <i>Motor casing oil capacity</i> | 1  | [l]                | <i>Capacità olio corpo motore</i> | 1  | [l]              |
| <i>Max casing Pressure</i>       | 6  | [bar] (peak)       | <i>Pressione max in carcassa</i>  | 6  | [bar] (picco)    |
|                                  | 3  | [bar] (continuous) |                                   | 3  | [bar] (continuo) |

|   |  |
|---|--|
| <b>Note:</b>  | <b>Nota:</b>   |
| Continuous or average working pressure should be chosen in function of the required service lifetime (bearing lifetime) | La pressione continua o media di lavoro va determinata in funzione della vita del motore (vita dei cuscinetti) |