

Dual displacement control circuit.

Circuito di controllo del cambio di cilindrata

A/B Inlet /outlet  
(C) Pilot min. 20 bar- max 30 bar  
D Drain

GD4			600 - 200		900 - 300		1000 - 350	
Displacement	Cilindrata	cc/rev	547	192	887	310	1018	356
Bore Ø	Alesaggio	mm	44		56		60	
Stroke*	Corsa	mm	40	14	40	14	40	14
Specific torque	Coppia specifica	Nm/bar	8,54	2,99	13,84	4,84	15,88	5,56
Cont. pressure	Pres. Continua	bar	250		250		250	
Peak pressure	Pres. Picco	bar	400		375		350	
Max. speed	Velocita' max	rpm	700	1400	600	1200	500	1000
Peak power	Potenza picco	kW	150	140	150	140	150	140
*Other options available								
Approx weight:		Kg 166	Peso approssimato:		Kg 166			
Motor case oil capacity:		Lit 6,5	Capacità olio del corpo motore:		Lit 6,5			
Max. Case pressure :		1bar Cont. 5bar Peak	Max.pressione in carcassa:		1bar Continuo 5bar Picco			

## ORDER CODES

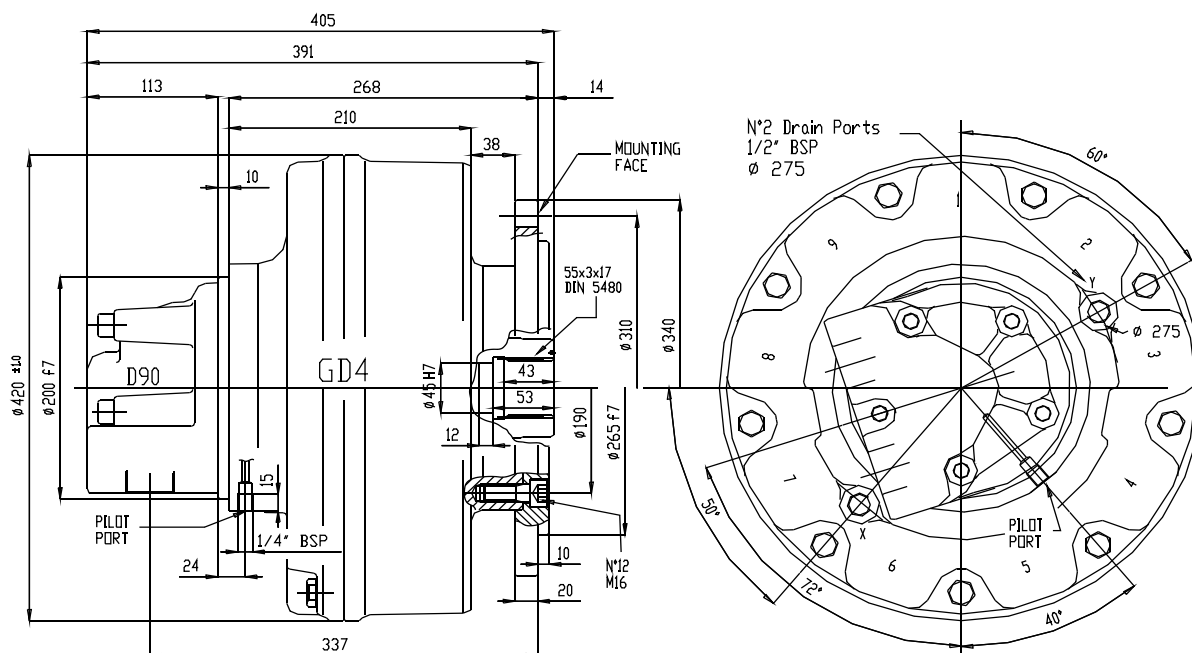
## CODICI D'ORDINE

GD4 - ① ② ③ ④ + ⑤ ; ⑥

- ① Nominal displ. see Table above
- ② Shaft option: **9** female 55-3-17 DIN 5480
- ③ Bearings: **G** spherical roller bearings
- ④ Other options: **U** without shaft seal  
**SV** stainless steel shaft sleeve  
**V** Vytan seals  
**A** high pressure shaft seal- pls consult tech. Office-
- ⑤ Distributor D90 standard
- ⑥ Direction of shaft rotation: standard motors are supplied with clockwise rotation( viewed from shaft end ) with flow in port A, out port B  
**R** clockwise rotation  
**L** anticlockwise rotation

- ① Cilindrate nominali. Vedi Tabella sopra
- ② Opzioni albero: **9** femmina 55-3-17 DIN 5480
- ③ Cuscinetti: **G** cuscinetti a rulli di botte
- ④ Altre opzioni : **U** senza anello di tenuta  
**SV** protezione acciaio albero  
**V** guarnizioni in Vytan  
**A** anello di tenuta alta pres. pls consult tech. Office-
- ⑤ Distributore D90 standard
- ⑥ Rotazione albero: i motori standard sono forniti con senso di rotazione orario (visto dal lato albero) flusso in ingresso in port A e uscita in port B  
**R** clockwise rotation  
**L** anticlockwise rotation

070404.3P



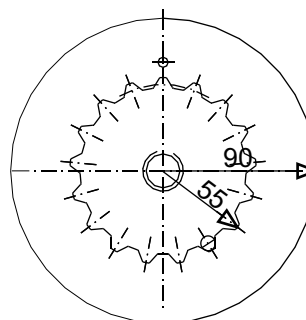
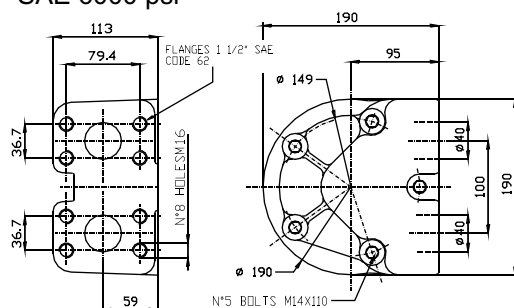
## MAIN PORT CONNECTIONS

FISSAGGIO RACCORDI OLIO

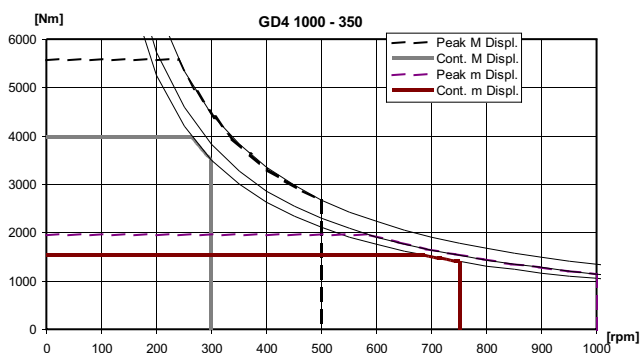
## SPLINE DATA / CALETTAGGIO

### Distributor type "D90"

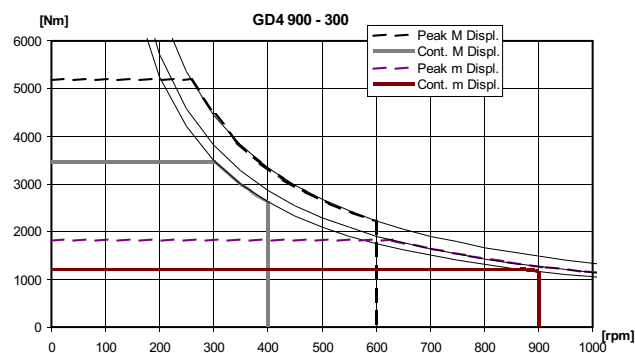
1,5" SAE 6000 psi



## TORQUE -SPEED-POWER



## COPPIA-VELOCITÀ-POTENZA



### GD4 600 - 200

