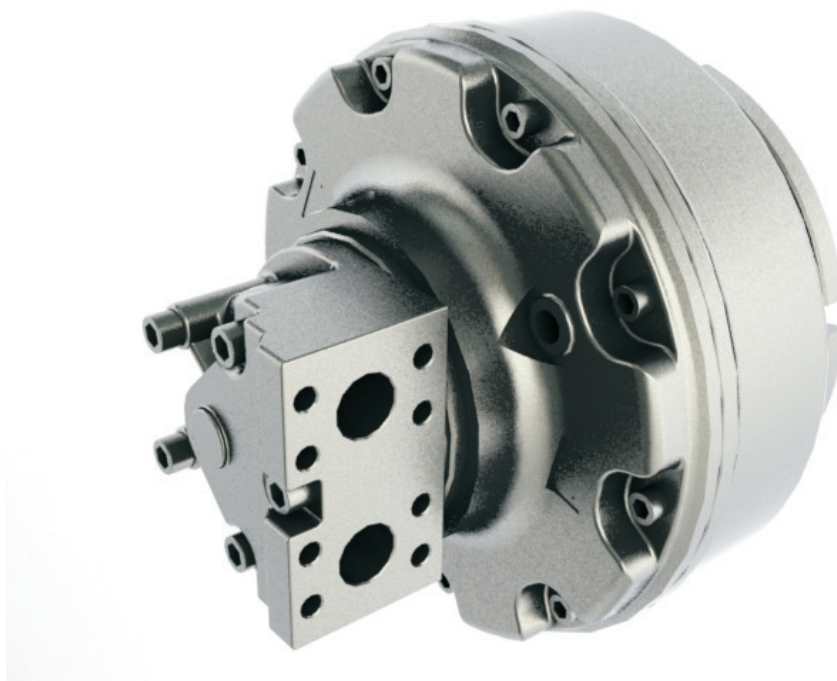


## GD4A

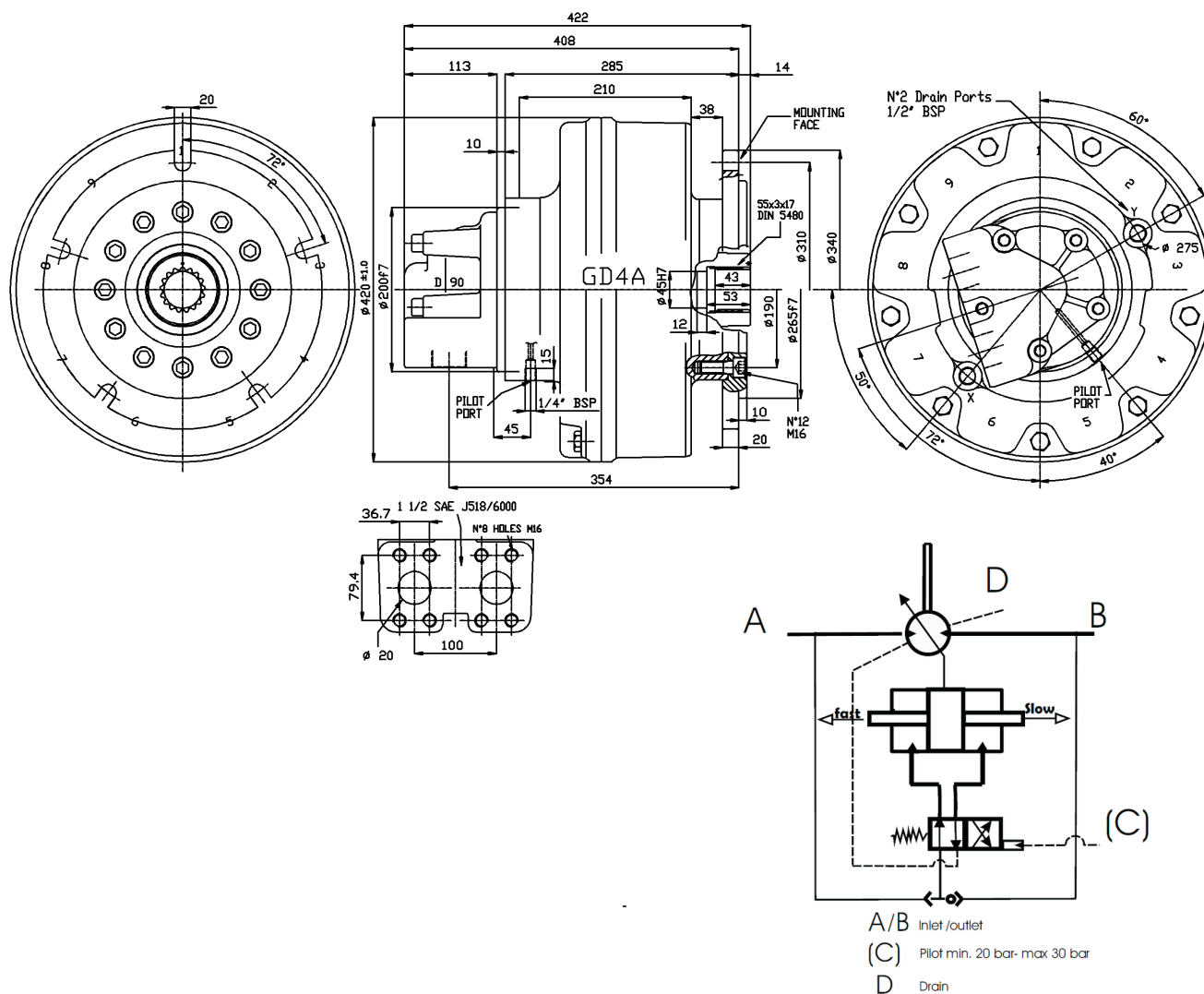


**TABELLA DI PERFORMANCE**  
**PERFORMANCES TABLE**

		Max	Min	Max	Min	Max	Min
<b>GD4A</b>		<b>600</b>	<b>200</b>	<b>900</b>	<b>300</b>	<b>1000</b>	<b>350</b>
<b>Displacement / Cilindrata</b>	<b>[cc/rev]</b>	547	192	887	310	1018	356
<b>Bore / Alesaggio</b>	<b>[mm]</b>	44		56		60	
<b>Stroke / Corsa</b>	<b>[mm]</b>	40	14	40	14	40	14
<b>Specific Torque / Coppia Specifica</b>	<b>[Nm/bar]</b>	8.7	3.0	14.1	4.9	16.2	5.7
<b>Pressure Rating / Press. Nominale</b>	<b>[bar]</b>	250		250		250	
<b>Peak Pressure / Pressione di Picco</b>	<b>[bar]</b>	400		375		350	
<b>Cont. Speed / Velocità cont.</b>	<b>[rpm]</b>	550	1100	400	900	300	750
<b>Max. Speed / Velocità max.</b>	<b>[rpm]</b>	700	1400	600	1200	500	1000
<b>Peak Power / Potenza di Picco</b>	<b>[kW]</b>	150	140	150	140	150	140


<b>Approximative mass</b>	<b>166</b>	<b>[kg]</b>	<b>Massa approssimativa</b>	<b>166</b>	<b>[kg]</b>
<b>Motor casing oil capacity</b>	<b>6,5</b>	<b>[l]</b>	<b>Capacità olio corpo motore</b>	<b>6,5</b>	<b>[l]</b>
<b>Max casing Pressure</b>	<b>5</b>	<b>[bar] (peak)</b>	<b>Pressione max in carcassa</b>	<b>5</b>	<b>[bar] (picco)</b>
	<b>1</b>	<b>[bar] (continuous)</b>		<b>1</b>	<b>[bar] (continuo)</b>
<b>Note:</b>			<b>Nota:</b>		
Continuous or avarage working pressure should be chosen in function of the required service lifetime (bearing lifetime)			La pressione continua o media di lavoro va determinata in funzione della vita del motore (vita dei cuscinetti)		

## DIMENSIONI D'INGOMBRO DIMENSIONAL DRAWING



## CALETTATURE SPLINE DATA

**55-3-17 DIN 5480**



$d_0$	$\emptyset 51,0$	
$d_1$	$\emptyset 55,0$	$\begin{matrix} +0,740 \\ \text{green} \\ +0 \end{matrix}$ H14
$d_2$	$\emptyset 49,0$	$\begin{matrix} +0,160 \\ \text{green} \\ +0 \end{matrix}$ H11
A	$\emptyset 5,25$	
$d_A$	$\emptyset 43,807$	H11
$d_3$	$\emptyset 54,4$	$\begin{matrix} -0 \\ \text{green} \\ -0,190 \end{matrix}$ h11
$d_4$	$\emptyset 48,4$	$\begin{matrix} -0 \\ \text{green} \\ -0,620 \end{matrix}$ h14
B	$\emptyset 6,0$	
$d_B$	$\emptyset 60,873$	f8